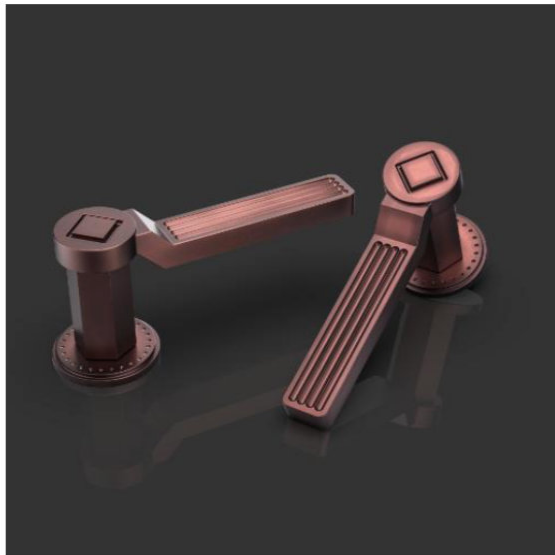


3v

ARCHITECTURAL HARDWARE



INDUSTRIAL

530.INDUSTRIAL.100.145.050.RO.xxxx

3v 145 x 36 x 65mm 'INDUSTRIAL' design lever handle on 50mm dia. x 6mm round rose – Unsprung furniture for use with heavily sprung latches and locks – exact door thickness to be confirmed for spindle length.

Click on the 'Finishes' tab below to see Oliver Knight finishes options