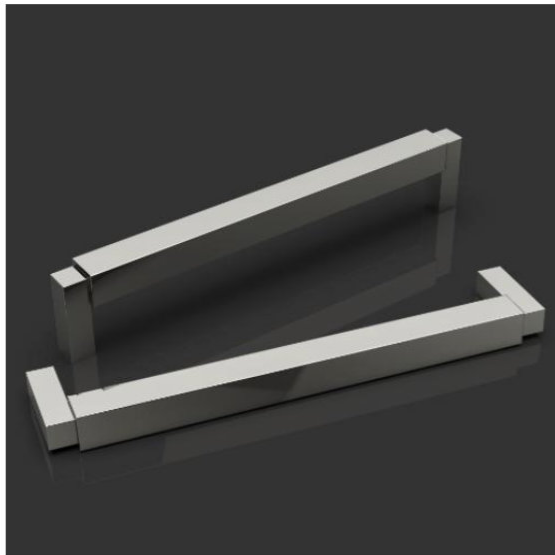




ARCHITECTURAL HARDWARE



GIFFORD

534.GIFFORD.100.0xxx.0x.xxxx

3v GIFFORD design 'XXXX' – 284, 434, 584
and 884mm (c/c) x 22 x 58mm projection -
300, 450, 600 and 900mm o/a pull handle -
Various fixing options to suit door
thicknesses.

Click on the 'Finishes' tab below to see
Oliver Knight finishes options