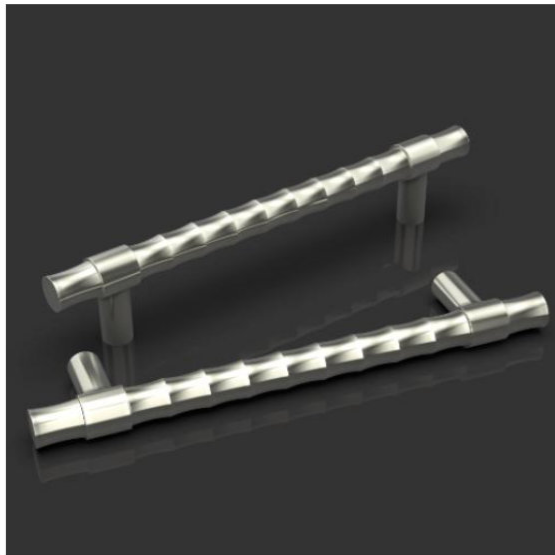




ARCHITECTURAL HARDWARE



REX

534.REX.100.0xxx.0x.xxxx

3v REX design 'XXXX' – 232 and 382mm (c/c) x 25mm dia. x 58mm projection – 300 and 450mm o/a pull handle – Various fixing options to suit door thicknesses.

Click on the 'Finishes' tab below to see Oliver Knight finishes options